

# SE SERIES

## NEMA 4X EMERGENCY LIGHT

### IMPORTANT SAFEGUARDS

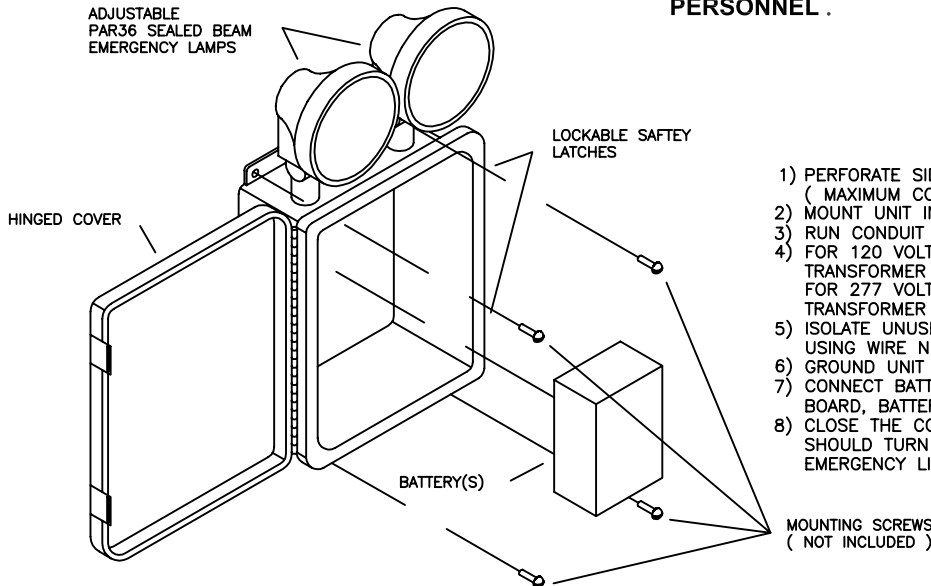
WHEN USING ELECTRICAL EQUIPMENT, BASIC SAFETY PRECAUTIONS SHOULD ALWAYS BE FOLLOWED INCLUDING THE FOLLOWING:

### READ AND FOLLOW ALL SAFETY INSTRUCTIONS

- 1) DO NOT USE OUTDOORS.
- 2) DO NOT LET POWER SUPPLY CORDS TOUCH HOT SURFACES.
- 3) DO NOT MOUNT NEAR GAS OR ELECTRIC HEATERS.
- 4) USE CAUTION WHEN SERVICING BATTERIES. BATTERY ACID CAN CAUSE BURNS TO SKIN AND EYES. IF ACID IS SPILLED ON SKIN OR IN EYES FLUSH WITH FRESH WATER AND CONTACT PHYSICIAN IMMEDIATELY.
- 5) EQUIPMENT SHOULD BE MOUNTED IN LOCATIONS AND AT HEIGHTS WHERE IT WILL NOT BE READILY SUBJECT TO TAMPERING BY UNAUTHORIZED PERSONNEL.
- 6) THE USE OF ACCESSORY EQUIPMENT NOT RECOMMENDED BY THE MANUFACTURER MAY CAUSE AN UNSAFE CONDITION.
- 7) DO NOT USE THIS EQUIPMENT FOR OTHER THAN INTENDED USE.
- 8) CAUTION: SEALED LAMPS MAY HAVE INNER HALOGEN CYCLE BULB. THIS PRESSURE FILLED INNER BULB COULD SHATTER IF SCRATCHED OR DAMAGED. IF THE OUTER SEALED BEAM IS INTACT, THIS WILL BE NO PROBLEM. IF THE OUTER SEALED ENVELOPE IS BROKEN DO NOT OPERATE BUT REMOVE AND DISPOSE OF LAMP WITH CARE.

### SAVE THESE INSTRUCTIONS

**NOTE :SERVICING SHOULD BE PERFORMED BY QUALIFIED SERVICE PERSONNEL .**



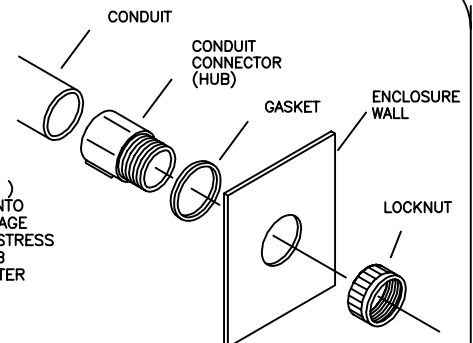
### MOUNTING INSTRUCTIONS

- 1) PERFORATE SIDE OF UNIT IN LOCATION OF CONDUIT ACCESS ( MAXIMUM CONDUIT SIZE 2 1/2" ).
- 2) MOUNT UNIT IN DESIRED LOCATION.
- 3) RUN CONDUIT AND AC WIRES TO UNIT.
- 4) FOR 120 VOLT CONNECTION. CONNECT 120V AC WIRE TO THE BLACK TRANSFORMER WIRE AND COM TO WHITE TRANSFORMER WIRE. FOR 277 VOLT CONNECTION. CONNECT THE 277V WIRE TO THE VIOLET TRANSFORMER WIRE AND COM TO WHITE TRANSFORMER WIRE.
- 5) ISOLATE UNUSED BLACK (120V) OR VIOLET (277V) TRANSFORMER WIRE USING WIRE NUT PROVIDED ON VIOLET (277V) WIRE.
- 6) GROUND UNIT IN ACCORDANCE WITH THE REQUIREMENTS OF THE NEC.
- 7) CONNECT BATTERY TO UNIT ( BATTERY(-) TO BLACK WIRE FROM CIRCUIT BOARD, BATTERY(+) TO THE RED WIRE FROM CIRCUIT BOARD ).
- 8) CLOSE THE COVER AND APPLY AC POWER TO THE UNIT. THE PILOT LIGHT SHOULD TURN ON INDICATING " AC ON ". PUSH THE TEST SWITCH; THE EMERGENCY LIGHT SHOULD LIGHT UP.

**WARNING - READ CAREFULLY**  
**WARRANTY VOID IF DIRECTIONS NOT FOLLOWED OR WARRANTY CARD NOT REGISTERED**

### CONDUIT INSTRUCTIONS

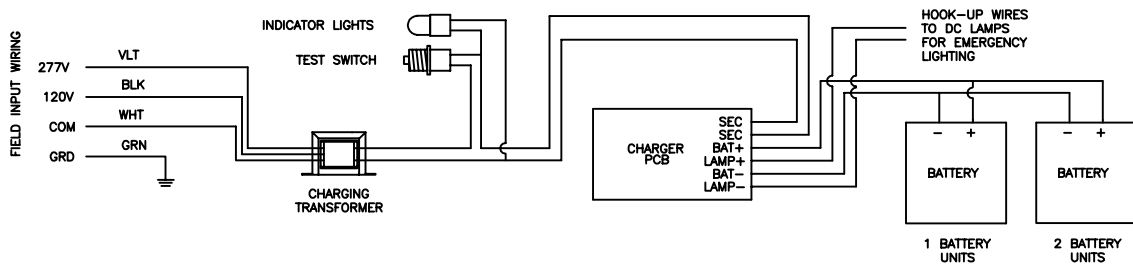
CUT HOLES IN ENCLOSURE AT THE DESIRED LOCATION. THE USE OF A STANDARD HOLE SAW IS THE PREFERRED METHOD. ( NOTE ENCLOSURES DRILLED FOR CONDUIT OR OTHER MODIFICATIONS MAY NOT BE RETURNED FOR CREDIT. ) FIRST SECURE THE CONDUIT CONNECTOR (HUB) ONTO THE CONDUIT. THEN SECURE THE CONDUIT CONNECTOR (HUB) INTO THE PREPARED ENCLOSURE HOLE USING THE CONNECTOR LOCKNUT. CAUTION: IN ORDER TO PREVENT ENCLOSURE DAMAGE AND MAINTAIN THE ENCLOSURE REQUIREMENTS, THE CONDUIT SHOULD BE ALIGNED SO AS TO PREVENT UNNECESSARY STRESS ON THE ENCLOSURE WALLS. IN ORDER TO OBTAIN MAXIMUM CORROSION PROTECTION, WITH METALLIC CONDUIT AND HUB ASSEMBLIES, COVER (COAT) ALL EXPOSED METAL AND SEAL OFF THE CONDUIT OPENINGS WHERE THE CONDUCTORS ENTER THE ENCLOSURE.



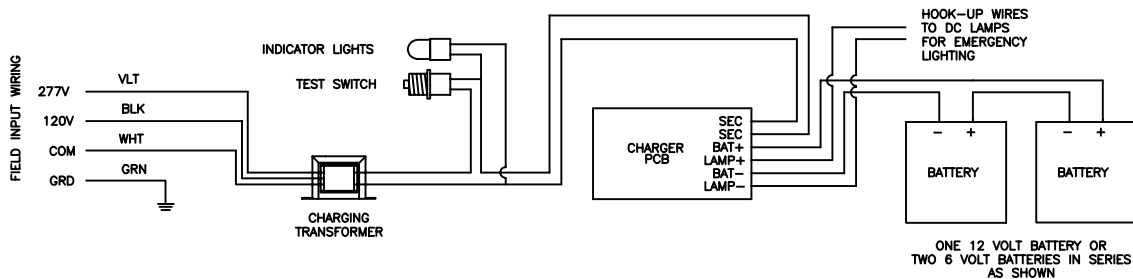
# ELECTRICAL DIAGRAMS

**NOTE:** SERVICING SHOULD BE PERFORMED BY QUALIFIED SERVICE PERSONNEL. IF THE UNIT MALFUNCTIONS, DISCONNECT FROM POWER SUPPLY AND CONTACT BIG BEAM EMERGENCY SYSTEMS, INC. OR THE LOCAL BIG BEAM EMERGENCY SYSTEMS, INC. REPRESENTATIVE, WRITTEN AUTHORIZATION MUST BE OBTAINED PRIOR TO THE PREPAID RETURN OF ANY EQUIPMENT. THE BATTERY(S) MUST ALWAYS BE PROPERLY MARKED AND SHIPPED SEPARATELY.

## 6 VOLT UNITS



## 12 VOLT UNITS



117-0505-0896

**BIG BEAM  
EMERGENCY SYSTEMS, INC.**  
290 EAST PRAIRIE STREET, P.O. BOX 518  
CRYSTAL LAKE, IL 60039-0518  
PHONE: (815) 459-6143  
FAX: (815) 459-6126  
web site [www.bigbeam.com](http://www.bigbeam.com)  
email [info@bigbeam.com](mailto:info@bigbeam.com)