

PT

The PT transforms higher AC voltages down to 120VAC. Primary Input leads of 230, 277 & 460VAC are provided. The unit is enclosed in a NEMA 1 housing equipped with knockouts for 1/2" conduit.

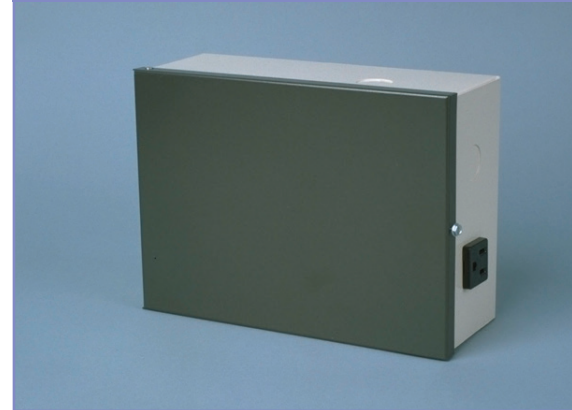
PTR

The PTR performs all the functions of the PT and is also equipped with a 120VAC output receptacle.

Series Features

- Converts 230, 277 or 460VAC to 120VAC
- Wall Mounts Near Emergency Light AC Input
- Measures 8.5" L x 6.5" H x 3.5" D
- Rated 65 VA Continuous Load
- Connection to Unit Equipment Maintains UL Listing

PT/PTR



TD60

The TD60 provides an automatic time delay after AC Power is restored to an emergency light unit. A single adjustment setting of 1–60 minutes determines the period of operation on all future cycling periods.

TDP

The TDP combines both the time delay features of the TD60 and the step-down voltage features of the PT into one housing.

Series Features

- External Mount
- 1–60 Minute Time Delay Adjustment
- Converts 230, 277 or 460VAC to 120VAC or 277 VAC (TDP)
- Wall Mounts Near Emergency Light AC Input
- Measures 8.5" L x 6.5" H x 3.5" D
- Rated 65 VA Continuous Load

TD60/TDP



-TD

The factory-installed TD Option provides an automatic time delay after AC Power is restored to an emergency light unit. A user-adjustable setting of 1–60 minutes determines the period of operation before automatic reset to standby condition. Such application is useful when testing remote heads, or in H.I.D. areas where illumination is lost until AC lamps re-strike and return to full brilliance. A 1–90 minute "TD" feature is included with the Quik-Chek™ Option.

Series Features

- Modular Construction
- Self-Contained within Unit
- 1–60 Minute Operation (User-Adjustable)
- Improves Battery Performance
- Automatic Reset to Standby

-TD

AVAILABLE ON:

Series	Page
ET	7
CL	8
BR	12
SC	14
IL	15
LT	17
AR	18
TCS	19
TCL	20
GA	23
SE	29
E4X	54