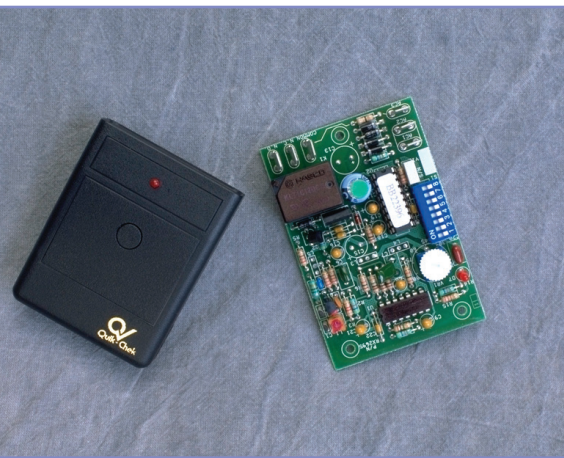


Quik-Chek™ Remote Testing



QUIK-CHEK™ LABOR-SAVING* REMOTE CONTROL TESTING

Quik-Chek™ is an exclusive (U.S. Patent #5148158 – Canadian #1320246) option for testing emergency lighting. Quik-Chek™ is the only product of its kind that allows for full code compliance in the periodic service and testing of emergency equipment.

Quik-Chek™ is a transmitter and receiver combination that allows a user to perform and witness periodic, code-required tests on emergency lighting units from the safety and convenience of the floor (or anywhere within 50 feet of the unit). A single press of the transmitter button simulates a power failure to the unit, and permits the observation of the lamps, illumination, and charging activity. The receiver is factory installed in the unit, and the transmitter is portable. We can't stress enough the labor savings and safety benefit of testing emergency lights in this manner.

Quik-Chek™ also always includes another important feature – User Adjustable Time Delay. Time delay is essential for installations in which the normal lighting is provided by HID lamps. Time delay keeps the emergency lights on for a preset period after power is restored. HID lighting can take 15–20 minutes to reach full brightness after even a brief power failure.

THE STATE-OF-THE-ART QUIK-CHEK™ DESIGN INCLUDES:

Integrated Design – Both the receiver and time delay functions are performed on a single circuit board, translating to enhanced reliability and easy servicing.

There is a built-in time delay circuit in the Quik-Chek receiver to keep the emergency light lamp heads on for a preset period of time. This time delay has an adjustable setting of 1 to 90 seconds or minutes.

To adjust the time delay setting there is a thumb wheel or knob on the receiver pc board.

Unit comes with setting of 1 second/minute on receiver board.

If you hold transmitter for less than 5 seconds it will operate in **SECONDS** and not in minutes.

If you hold transmitter between 5 – 10 seconds it will operate in **MINUTES** and not in seconds.

If you need to reset this mode of operation, you must hold the transmitter for 5 – 10 seconds and it will reset to **SECONDS**.

AVAILABLE ON:

Series	Page
ET	7
SC	14
IL	15
AR	17
TCS	18
TCL	19
GA	22
SE	28
E4X	50

STANDARD AVAILABLE ON:

Series	Page
MQ	10
RQ	13
IQ	16

Series Features

- Quik-Chek™ Receiver Built into Each Equipped Unit
- One Transmitter (Supplied) Operates Every Unit
- Operates on Coded Digital Frequency
- 50-Foot Range Minimum
- 1–90 Minute Adjustable Time Delay
- Operational Test Log Card
- Automatically Activates Recessed or Out of Reach Units
- Permits One Individual to Conduct and Record Tests
- Eliminates Work Stoppage Resulting from Ladders and Extension Equipment being Placed in the Workplace
- Allows for Fast Maintenance in High-Traffic Areas
- Automatic System Reset to Standby

Code Test Compliance (Life Safety Code, Section 7.9.3)

A functional Test shall be conducted on every required emergency lighting system at 30-day intervals for a minimum of 30 seconds.”

Code Written Compliance (National Electrical Code, 700-4)

“A written record shall be kept of such tests and maintenance.”

Full Load Test (National Electrical Code, 700-4)

“...Testing any emergency lighting system or power system under load shall be provided.”