

- Please read this manual carefully before installing emergency tube.

WARNING:

Battery maintenance instruction:

Once a month, emergency tubes need to charge and discharge at least one time in order to ensure better battery performance.

Installation instruction:

This product must be installed by a qualified electrician in accordance with the applicable installation code.

Operation temperature: -20 °C (-4 °F) to 65 °C (149 °F)

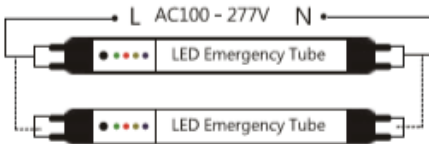
Charging temperature: 0 °C (32 °F) to 45 °C (113 °F)

Installation instruction:

IMPORTANT: Rewiring fixture according to the AC input instructions below.

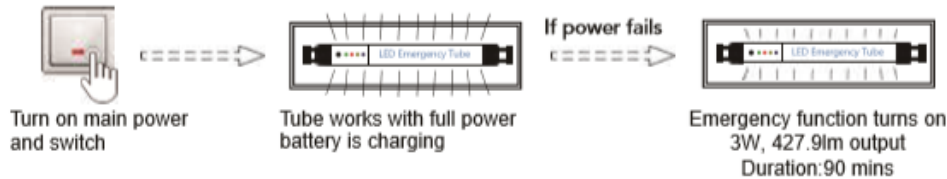
- Please turn off main power before rewiring and installation

Double sides input-Installation for rewiring

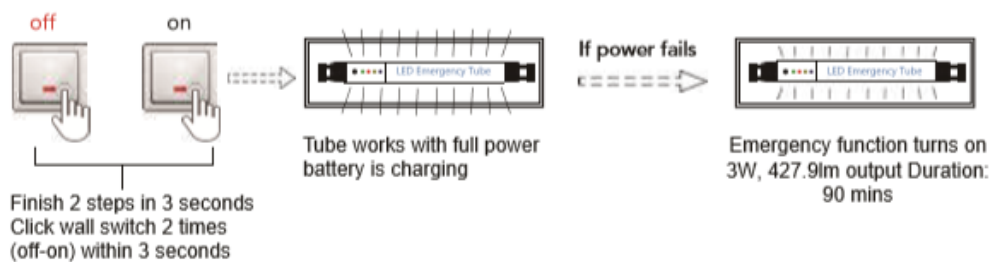


Operation:

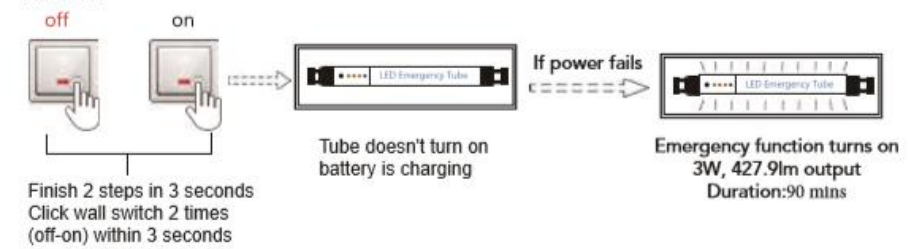
Start (First time connected with AC power)



Turn on



Discharge method once a month when lights are switch on and off during business hours.

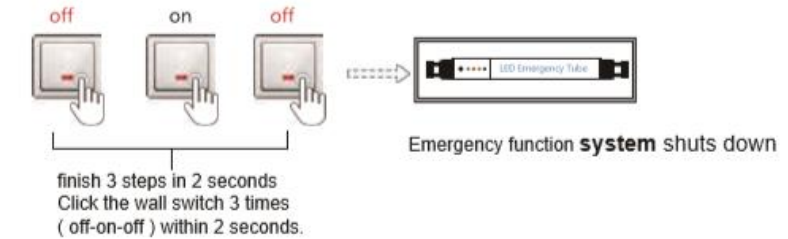


Start up and shut down emergency function system

Option

1:

Shut down:



Start up: as long as emergency tube is connected with AC power, click the wall switch, emergency function system starts up.

Option 2

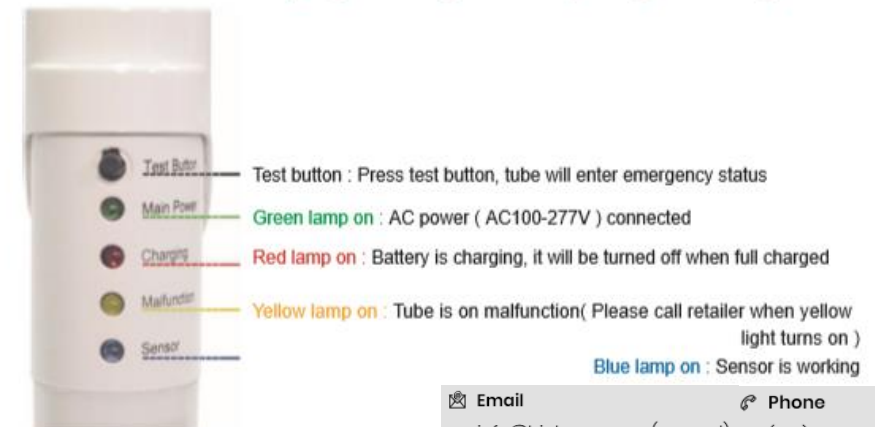
Shut down:

When emergency function turns on, press " Test button" 3 times within 2 seconds, emergency function system shuts down.

Start up:

When emergency function system shuts down, press " Test button" 3 times within 2 seconds, emergency function Starts up.

NOTICE: When emergency functions turns on (power cut), Press" Test button" 3 times within 2 seconds to shut down emergency function system, battery storage time can up to 12 months.



Email

info@bigbeam.com (general)

Phone

(815) 459-6100 (Office)

(815) 459-6143 (Sales)